



ULTRASOUND, INC.

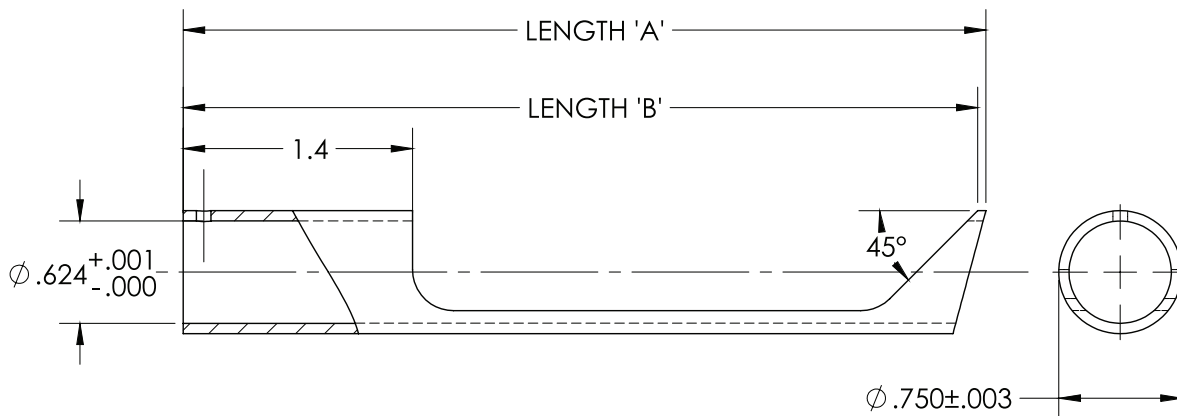
# IS REFLECTORS

## TLC PART NUMBER:

- IS-RAR-0**  
 Right angle mirror for IS standard housing (0.625 Nom. OD) with 0.3125" water path from end of transducer to edge of 45 degree mirror.
- IS-RAR-1.5 QTX**  
 Right angle mirror for IS standard housing (0.625 Nom. OD) with 1.5" water path from end of transducer to center of 45 degree mirror.
- IS-RAR-2QTX**  
 Right angle mirror for IS standard housing (0.625 Nom. OD) with 2.0" water path from end of transducer to center of 45 degree mirror.
- IS-RAR-2.5QTX**  
 Right angle mirror for IS standard housing (0.625 Nom. OD) with 2.5" water path from end of transducer to center of 45 degree mirror.
- IS-RAR-4QTX**  
 Right angle mirror for IS standard housing (0.625 Nom. OD) with 4.0" water path from end of transducer to center of 45 degree mirror.



Right angle mirror for IS standard housing (0.625 Nom. OD) with variable water path from end of transducer to edge of 45 degree mirror.



PART NUMBER	"A" DIMENSION	"B" DIMENSION	WATER PATH
IS-RAR-0	2.19	2.17	0.3125
IS-RAR-1.5QTX	3.40	3.35	1.5
IS-RAR-2QTX	3.90	3.85	2.0
IS-RAR-2.5QTX	4.40	4.35	2.5
IS-RAR-4QTX	5.90	5.85	4.0

**TLC Ultrasound is a leading manufacturer and worldwide distributor of ultrasonic transducers.**

860-354-6333 • [www.tlcultrasound.com](http://www.tlcultrasound.com)